



Smart Transport

AddSecure Dashcam

The state-of-the-art vehicle Dashcam with integrated tracking functionality.

For a safer and smarter world

Reduce accidents, minimise claims, and protect your fleet

A fully integrated video telematics solution combining the power of vehicle telematics and camera technology.

With a 150-degree viewing angle, 1080p video resolution, and the latest in cloud-based camera technology, the AddSecure Dashcam automatically detects and captures high-definition footage of any incident, providing indisputable evidence of every event. Not only can this exonerate your drivers from false allegations and 50/50 claims, but by providing insurers with FNOL (First Notification Of Loss) you also minimise the final cost of claims where your drivers are at fault.

Benefits of the AddSecure Dashcam



Defence Against False Claims

Protect your drivers against false claims with undisputable, HD quality video footage.



Enhanced Fleet Safety

Effectively identify areas for improvement and achieve greater fleet safety.



Insurance Savings

Benefit from lowered accident rates and reduced insurance costs by providing FNOL.

With the AddSecure Dashcam, all vehicle footage, location and driver performance data are fully accessible via one, simple-to-use, web-based platform.

Thanks to the on-board 4G cloud-based technology, footage and data of detected incidents are instantly sent to the telematics platform, and available to view, analyse, and download immediately.

Key Features



Pillar-to-pillar viewing angle (150°)



Automatic system health checks



High definition 1080p resolution



Store data and footage for up to 1 year



GPS location tracking



On-board accelerometer



High-definition night vision



4G connectivity

AddSecure Forward Facing Camera 4G LTE

Part Number

AST-FFC-LTE-EUA/NAA



A fully customisable experience

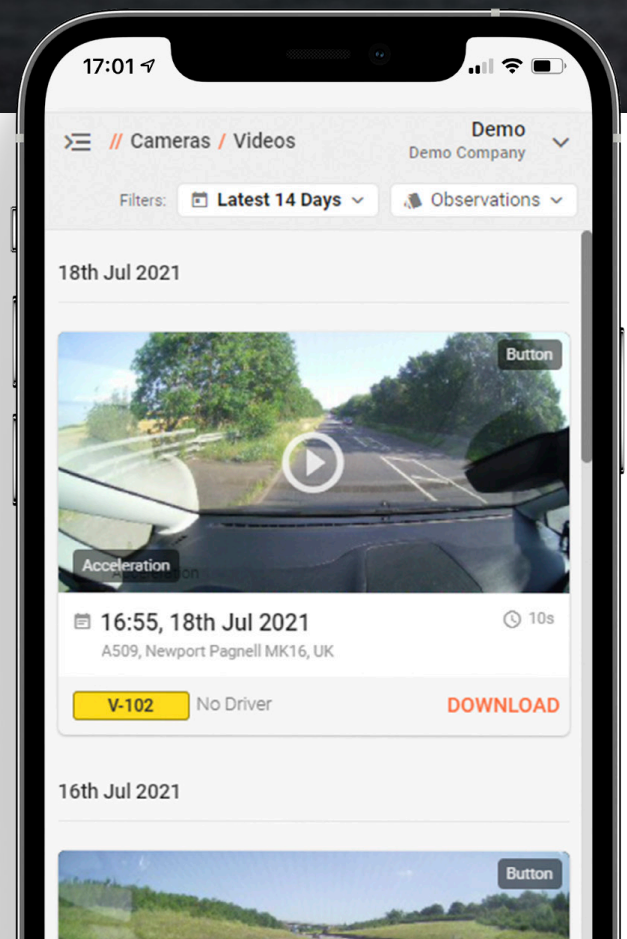
Protect Your Drivers

Exonerate your drivers from false claims and avoid hefty insurance payouts with undisputable video evidence of any incident.

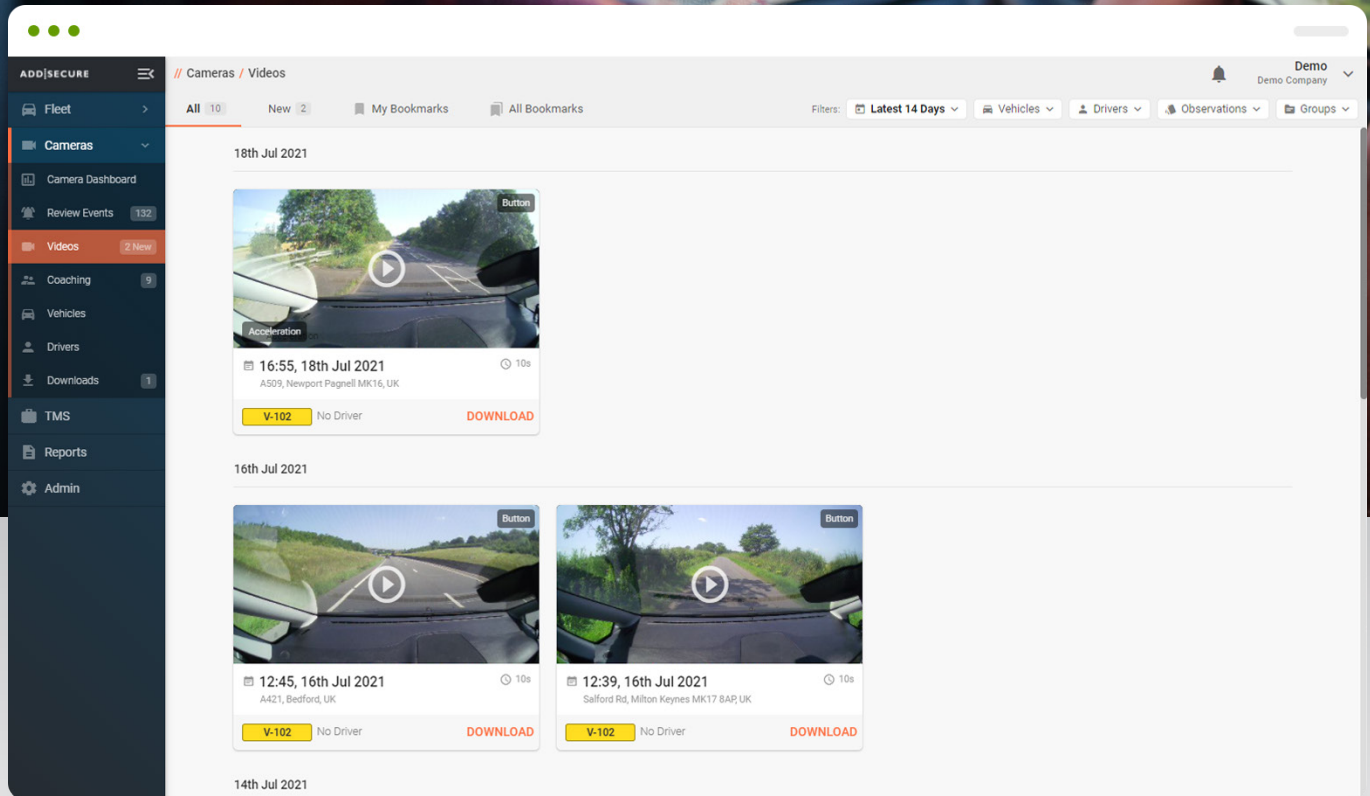
With a 150° viewing angle, the AddSecure Dashcam captures the full view of the road ahead.

With highly accurate GPS location and accelerometer data, you have the complete picture of any event.

- ▶ Defend your drivers against false claims and accusations.
- ▶ No more paying out for 50/50 claims.
- ▶ Protect your brand and your reputation.



Immediate incident playback



Instant Access to Your Footage

View and download your video footage from the Roadview platform for up to 1 year

With instant notifications of any incidents, you can ensure FNOL with your insurance providers, speeding up the claims process and helping to reduce your insurance costs. AddSecure's cloud-based camera technology is configured to detect any incident your vehicles may be involved in and automatically upload all event footage, location, and accelerometer data direct to our web-based video telematics platform, RoadView, within minutes of the event occurring for immediate viewing and analysis.

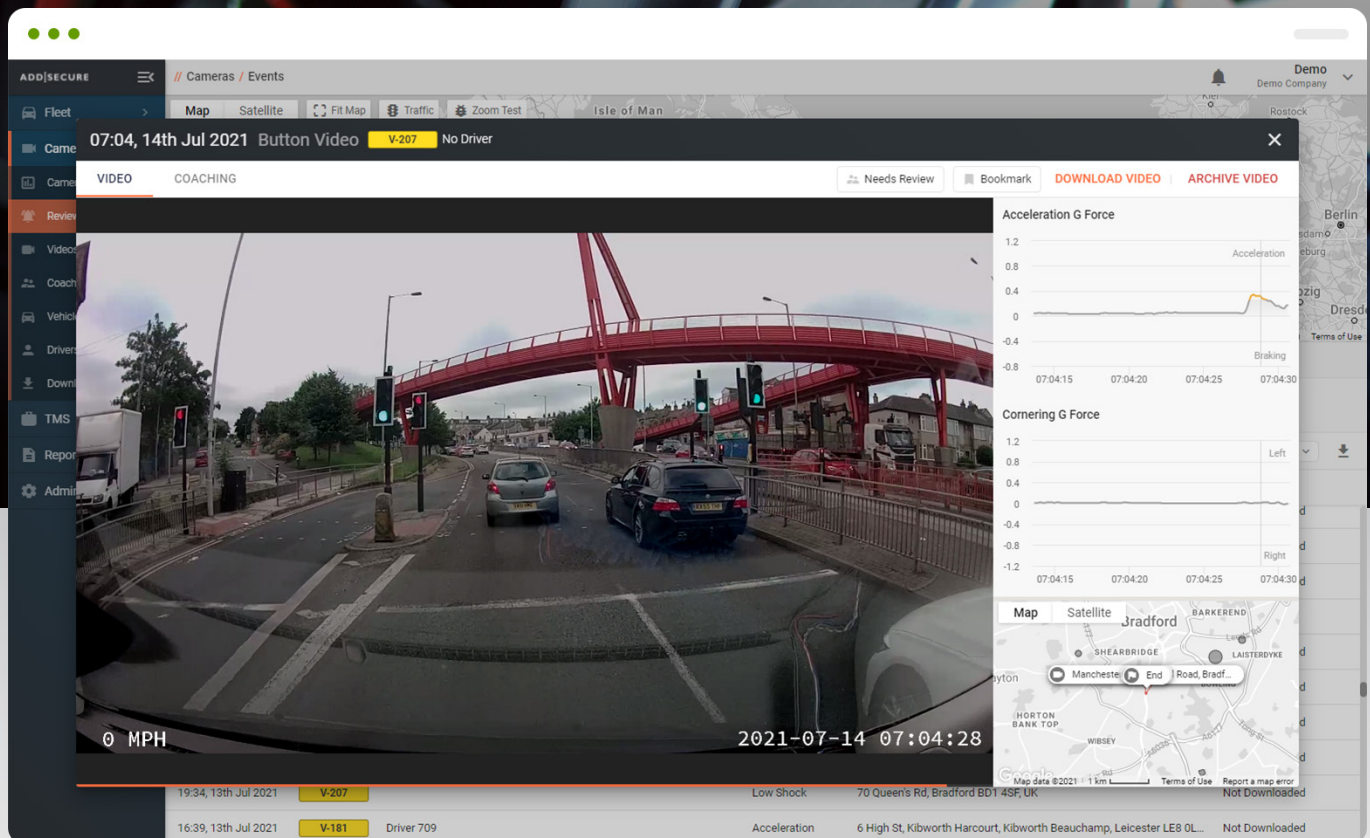
"We saw a dramatic improvement in our accident rates (reduced by 50%), insurance costs and overall fleet safety standards."



Waterlogic UK

Lee Shropshire, UK Fleet Manager

Improve driver behaviour



Detect Dangerous Driving Habits

Meet the next generation of camera technology

Help your drivers to stay safe on the road with the RoadView Driver Coaching module, allowing you to review, comment and debrief your drivers on their incident footage. Detect dangerous driving habits with detailed accelerometer and speeding reports, and use event footage to provide post incident feedback showing exactly where improvements need to be made. Implement an effective driver safety programme with personalised driver feedback and retraining.

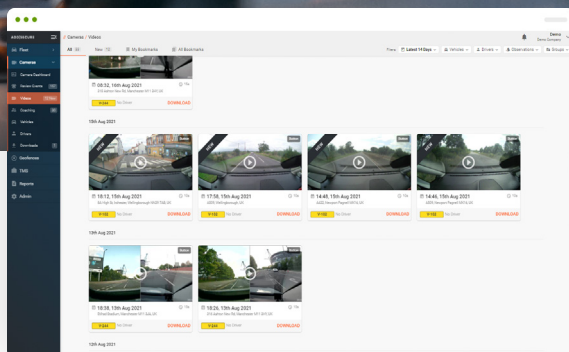
"We chose the AddSecure Verilocation telematics and camera system after careful consideration of what was available in the market. Having a system that fully integrated the camera technology, as well as the ease of use, was key to our decision to go with AddSecure. We were also impressed with the quality of their camera systems."



Dixons Carphone PLC

Martin Littlemore, Supplier Compliance Manager

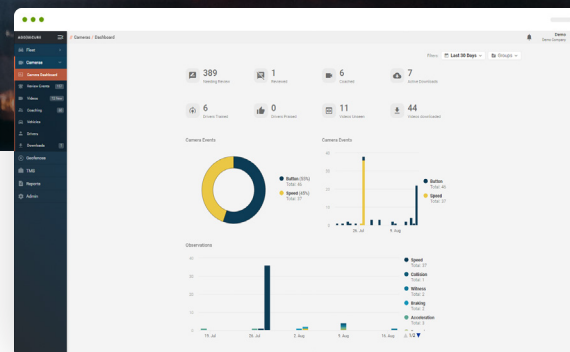
RoadView Functionality



Videos

Access your requested camera footage for up to one year on the RoadView platform.

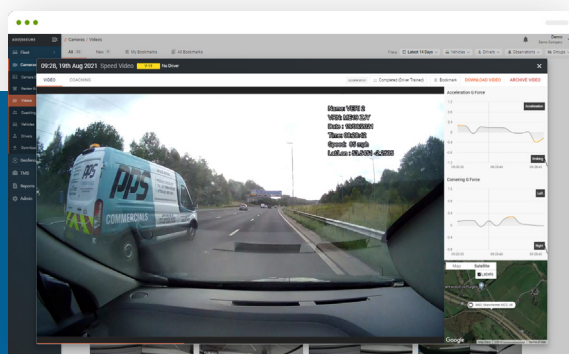
Filter by date range, vehicle, driver or group for ease of use. Hover over the footage to view a preview or click the play button to view in full screen mode.



Camera Dashboard

Access top level insight into your camera fleet with the Camera Dashboard.

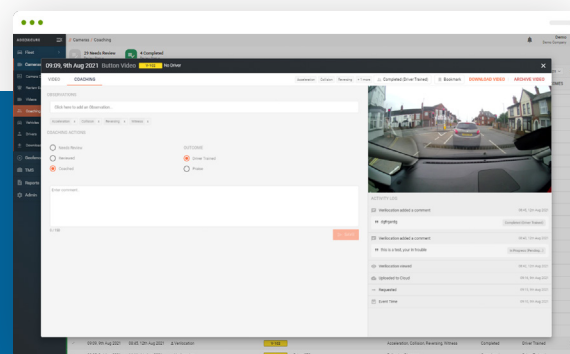
Identify where fleet safety improvements are required with overview reporting on camera events and post-event driver debriefing outcomes.



Video Review

Watch and review your vehicle's camera footage within minutes of an event occurring.

Identify exactly what happened and why with 1080p video footage, GPS location, time, date and speed information, and in-built accelerometer data.



Driver Coaching

Provide post-incident driver feedback with the RoadView Driver Coaching module.

Record any observations of unsafe driving manoeuvres and identify where additional driver training needs are required.

About AddSecure Smart Transport

At AddSecure, we see it as our mission to help make the world safer and smarter. We serve over 50,000 business customers and partners around Europe with premium solutions for secure critical communications and data.

Through the power of connected vehicle technology, we help businesses digitally transform their fleets, with access to key operational data in real-time, enabling them to meet the increased demands from transport buyers, global e-commerce and sustainability.

Interested in finding out more about the AddSecure Smart Transport Solution?
Contact us today on 0330 111 2636 or find out more at addsecure.com

ADD:SECURE

24-26 Queensbridge,
Old Bedford Road,
Northampton NN4 7BF

0330 111 2636
addsecure.com

Click to learn more [About AddSecure](#)